

STEP 02

truescience.

PERFECTING LOTION

# PUT YOUR BEST FACE FORWARD.

The Perfecting Lotion is an evolutionary step in skin care. Not simply a toner or serum, this Nrf2-packed formula is scientifically engineered to help diminish discoloration, visibly improve skin tone, and leave you with smoother, brighter, and more radiant looking skin.



## Benefits



### BALANCES

skin density and firmness



### MAINTAINS

healthier looking skin



### CLEANS

and refreshes the skin by 92%



### REDUCES

discolorations and evens skin tone



### HELPS

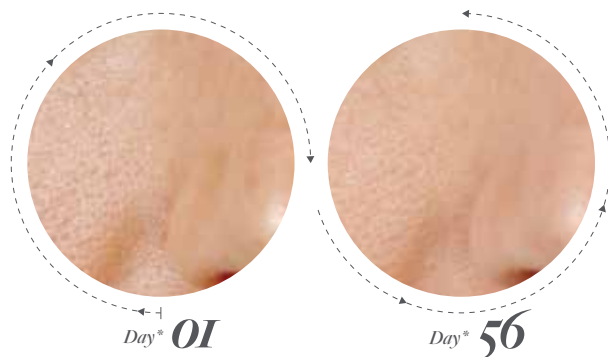
skin retain its own moisture



### BRIGHTENS

and illuminates the skins natural glow by 87%\*

## Results



Skin felt cleaner  
and refreshed.\*

**92%**



Skin looked brighter  
and more luminous.\*

**87%**

\*As part of an eight week clinical study, participants were asked to complete a self-assessment survey based on their use of the TrueScience products. Pictures displayed were taken of these participants. Individual results may vary.

## Directions



\*Fruit is for size reference purposes only.  
There is no fruit in the actual product.

### 01 DISPENSE

approximately one teaspoon into the palm of your hand.

### 02 APPLY

with your fingertips to the face, neck and décolletage.

### 03 FREQUENCY

Use morning and evening.

### *Do you have sensitive skin?*

If so, it's recommended that you test the lotion on your forearm before using it on your face. Apply a small amount to your inner forearm. If skin shows no reaction after a few minutes, apply to face or eyes as directed.

## Ingredients

Aqua (Water), Glycerin, Bupleurum Falcatum Root Extract, Brassica (Juncea/Oleracea Capitata/Oleracea Italica/Oleracea Botrytis/Oleracea Acephala) Sprout Extract, Xanthan Gum, Xylitylglucoside, Astragalus Membranaceus Root Extract, Anhydroxylitol, Bacopa Monniera (Brahmi) Leaf Extract, Silybum Marianum (Milk Thistle) Fruit Extract, Curcuma Longa (Turmeric) Root Extract, Piper Nigrum (Black Pepper) Seed Extract, Camellia Sinensis (Green Tea) Leaf Extract, Atractylodes Macrocephala Root Extract, Wasabia Japonica Root Extract, Xylitol, Isoceteth-20, Ethylhexylglycerin, Phenoxyethanol, Parfum (Fragrance), Malachite Extract, Tetrasodium Glutamate Diacetate, Sodium Hydroxide, Citric Acid, Glucose, D-Limonene (Parfum, Fragrance).

**WARNINGS:** Avoid direct contact with eyes. If eye contact occurs, flush gently and thoroughly with water. Discontinue use if rash or irritation occurs. If irritation persists, consult your health care practitioner.