

STEP **02**

truescience.

PERFECTING LOTION

# PUT YOUR BEST FACE FORWARD.

The Perfecting Lotion is an evolutionary step in skin care. Not simply a toner or serum, this Nrf2-packed formula is scientifically engineered to help diminish discoloration, visibly improve skin tone, and leave you with smoother, brighter, and more radiant looking skin.



## Benefits



### FIRMNESS

Reinforces skin density and firmness. skin's natural oils



### PROTECTION

Maintains a strong barrier function



### REFRESHING

92% skin felt cleaner and more refreshed\*



### SKINTONE

Reduces discolorations and evens skin tone



### MOISTURE

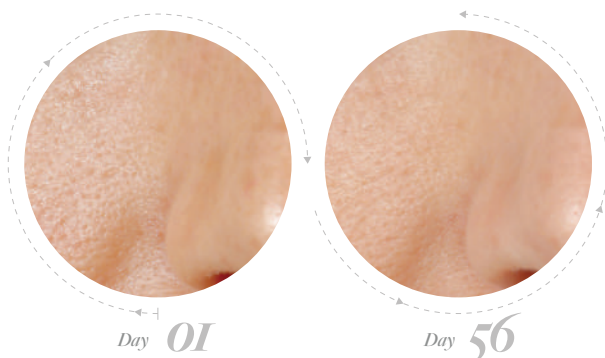
Helps skin retain its own moisture



### BRIGHTNESS

87% skin looked brighter and more luminous\*

## Results



Skin felt cleaner and refreshed.\*

**92%**

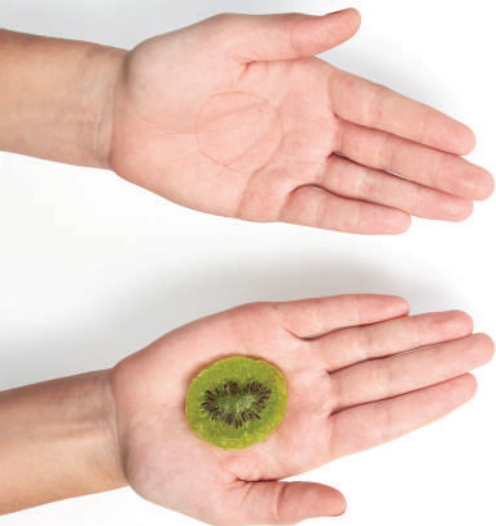


Skin looked brighter and more luminous.\*

**87%**

## Directions

---



01

### DISPENSE

approximately one teaspoon into the palm of your hand.

02

### APPLY

with your fingertips to the face, neck and décolletage.

03

### FREQUENCY

use morning and evening.

### *Do you have sensitive skin?*

If so, it's recommended that you test the cream on your forearm before using it on your face. Apply a small amount to your inner forearm. If skin shows no reaction after a few minutes, apply to face or eyes as directed.

## Ingredients

---

Aqua (Water), Glycerin, Bupleurum Falcatum Root Extract, Brassica (Juncea/Oleracea Capitata/Oleracea Italica/Oleracea Botrytis/Oleracea Acephala) Sprout Extract, Xanthan Gum, Xylitylglucoside, Astragalus Membranaceus Root Extract, Anhydroxylitol, Bacopa Monniera Extract, Silybum Marianum (Milk Thistle) Fruit Extract, Curcuma Longa (Turmeric) Root Extract, Piper Nigrum (Black Pepper) Seed Extract, Camellia Sinensis (Green Tea) Leaf Extract, Atractylodes Macrocephala Root Extract, Wasabia Japonica Root Extract, Xylitol, Isoceteth-20, Ethylhexylglycerin, Phenoxyethanol, Parfum (Fragrance), Malachite Extract, Tetrasodium Glutamate Diacetate, Sodium Hydroxide, Citric Acid, Glucose, D-Limonene.