

true**science**

REFINING MASK

A REFINED APPROACH TO DULL, FATIGUED LOOKING SKIN.

Fight oiliness and surface impurities with this innovative mud & clay mask. TrueScience® Refining Mask's clean, cutting-edge formula uses Kaolin Clay, Charcoal, and Nrf2 technologies to cleanse even the most stubborn dirt and pore-clogging oil, while the Dead Sea Mud and Jojoba beads loosen dead skin cells to exfoliate and sweep them away, restoring a healthy radiance to your skin.



Benefits



EXFOLIATES

gently exfoliates dead cell build up.



CLEANSSES

cleanses skin of dirt and surface impurities.



MOISTURIZES

moisturizes and refreshes tired looking skin.



PORE APPEARANCE

reduces the appearance of congested looking pores.



ABSORBS OIL

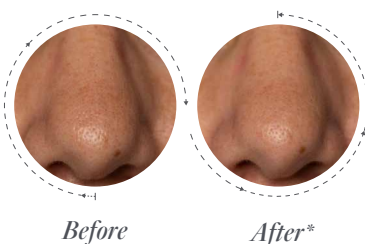
absorbs excess oil without drying out skin.



CELL TURNOVER

supports faster skin cell turnover for fresher looking skin.

Results



Serious Science for stunning results

Skincare science that smoothes, restores, and protects for visibly healthier-looking skin. A formula that's as good for the environment as it is for you. And that's just the start. Instead of covering up tired-looking skin, we're giving it a wake up call with a blend of clean ingredients to help cleanse, soothe, exfoliate, and refine in one mask that's perfect for biohackers.

*Individual results may vary

Directions

01 **APPLY**

massage a generous layer onto clean skin using circular motions, avoiding the eyes.

02 **RINSE**

leave on for 5-20 minutes, then rinse thoroughly with water.

03 **FREQUENCY**

use as a full face mask 1 to 3 times a week or a spot treatment as needed.

Do You Have Sensitive Skin?

Test product on forearm before using on face.
Apply a small amount to your inner forearm.
If skin shows no reaction after a few minutes,
apply to face as directed.

Ingredients

Aqua, Kaolin, Hydrogenated Jojoba Oil, Montmorillonite, Pentylene Glycol, Cetyl Alcohol, Glycerin, Caprylic / Capric Triglyceride, Camellia Sinensis Leaf Extract, Piper Nigrum Seed Extract, Bacopa Monnieri Extract, Silybum Marianum Extract, Behenyl Alcohol, Sea Silt, Charcoal Powder, Glyceryl Stearate, Palmitic Acid, Stearic Acid, Caprylyl Glycol, Phenylpropanol, Propanediol, Stearalkonium Hectorite, Lauryl Alcohol, Lecithin, Myristyl Alcohol, Propylene Carbonate, Tetrasodium Glutamate Diacetate, Tocopherol, Hydroxyacetophenone.

WARNINGS: For external use only. Avoid direct contact with eyes. If eye contact occurs, flush gently and thoroughly with water. Discontinue use if rash or irritation occurs. If irritation persists, consult your health care practitioner.